

## FEATURES

- 1.2mm thick stainless steel
- Perfect stands for ATHP/ATMG/ATCB /ATRC Series
- Full stainless steel stand

ATSEC-12



ATSEC-24



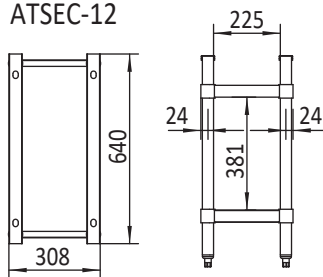
ATSEC-36



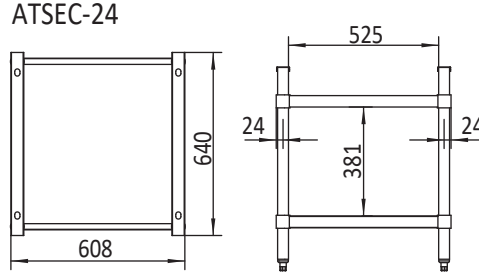
ATSEC-48



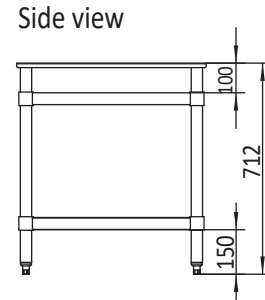
ATSEC-12



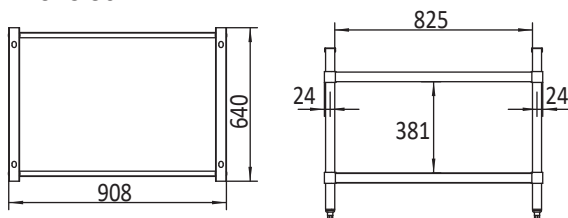
ATSEC-24



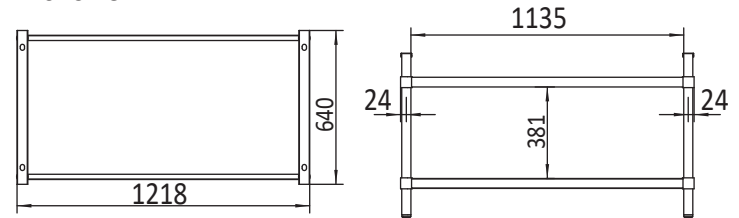
Side view



ATSEC-36



ATSEC-48



INFORMATION	ATSEC-12	ATSEC-24	ATSEC-36	ATSEC-48
Dimensions(mm)	W308 x D640 x H712,10.1kg	W608 x D640 x H712,12.4kg	W908 x D640 x H712,15kg	W1218 x D640 x H712,17.5kg
Packaging Dimensions(mm)	W330 x D645 x H100,11kg	W630 x D645 x H100,14.3g	W930x D645 x H100,17.5kg	W1240x D645 x H100,19.7kg
<b>RRP</b>	<b>\$295.00</b>	<b>\$345.00</b>	<b>\$405.00</b>	<b>\$475.00</b>